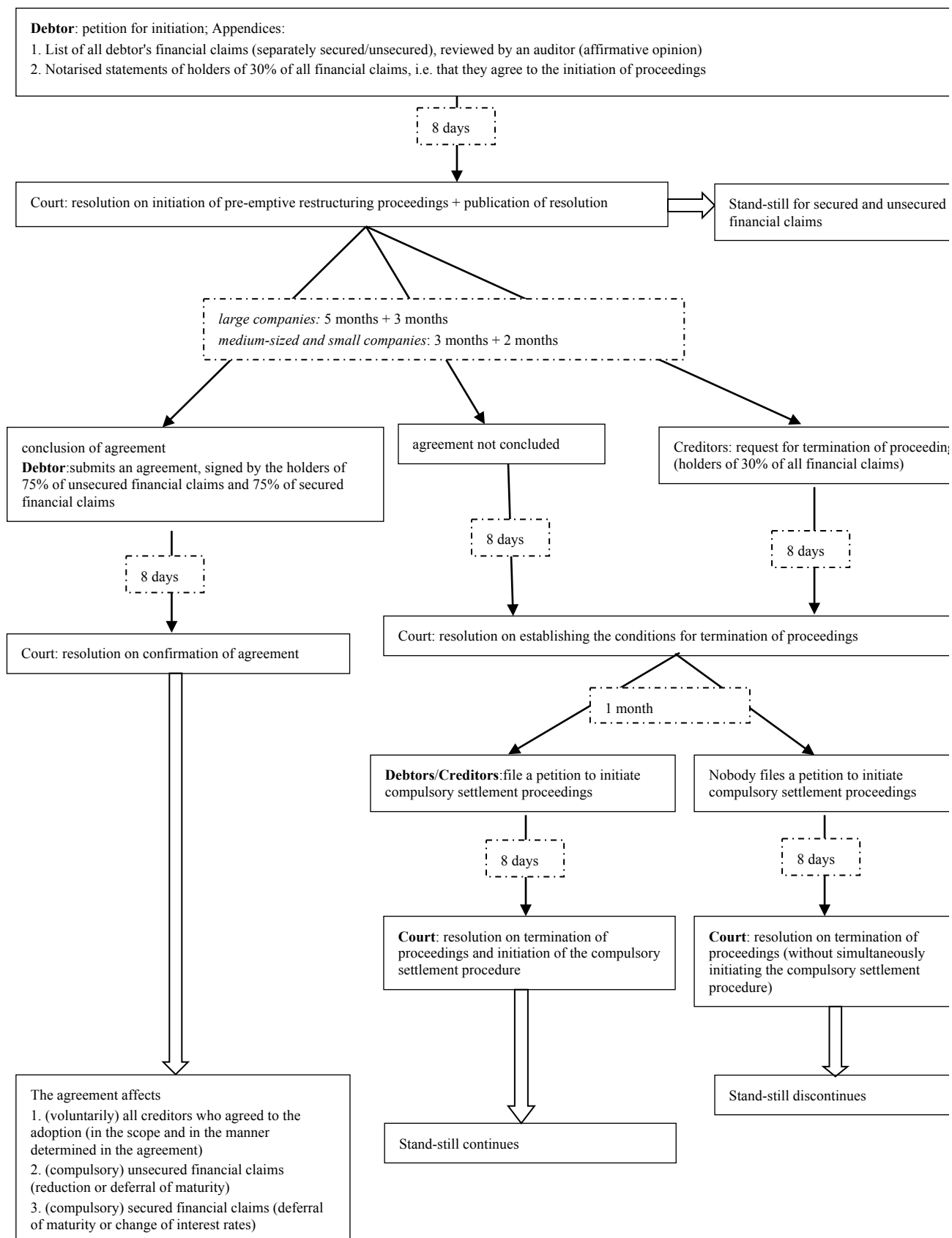
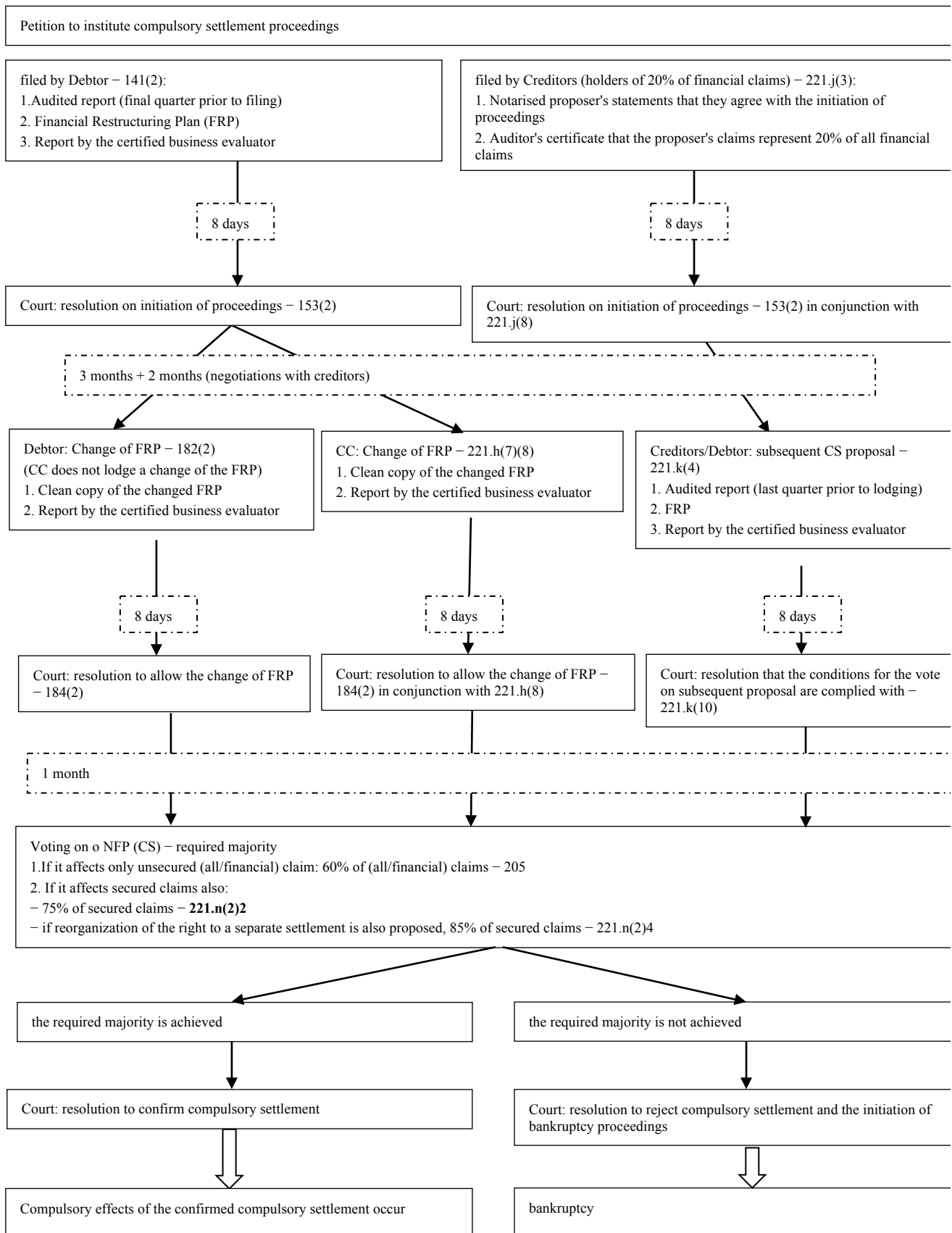


Schematic presentation of reorganization proceedings

Preventive restructuring proceedings (instituted against small, medium-sized or large companies with share capital which shall most likely become insolvent within a one-year period)



Compulsory settlement proceedings – with special rules on compulsory settlement proceedings (instituted against small, medium-sized or large companies with share capital)



Simplified compulsory settlement proceedings (instituted against micro companies and sole proprietors, who meet the criteria for small and micro companies)

